



Standard Hourmeter

Tech Support 1-800-265-1818
<http://usa.vdo.com>

Instruction Sheet A2C59517158

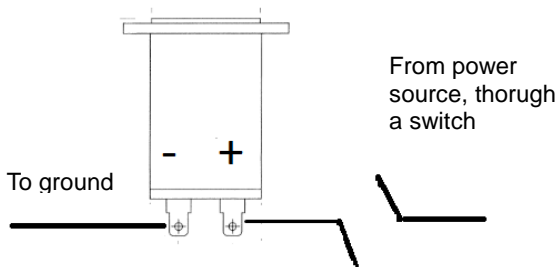
Revision -6/2017



Voltage requirements vary depending on your hourmeter. Please read part identification label on product before wiring this product

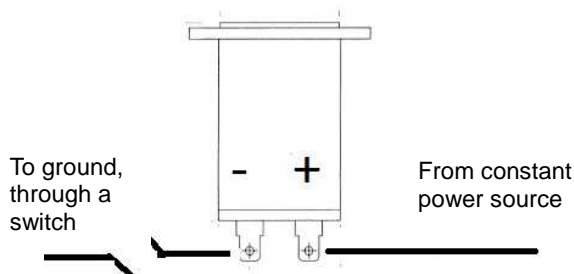
2 Wire Hourmeter: Wiring options

Option 1 – Switched Power/Constant Ground



Switched power can be sourced from Ignition Switch, ignition system or other 'hot' source when engine is in operation.

Option 2 – Switched Ground/Constant Power



Switched ground can be in the form of a normally open pressure switch (that close when engine is running) or other ground source that is active only when engine is running.

Read these instructions thoroughly before installation. Do not deviate from assembly or wiring diagram. Always disconnect battery round before making any electrical connections.

IMPORTANT: Mounting dimensions vary for different gauges. Please be certain to follow the instructions for your specific gauge.

Mounting Dimensions

1. Round body hourmeters require a 52mm hole for mounting
2. Square body hourmeters require a 25mm x 37mm square hole

Merchandise warranted against defects in factory workmanship and materials for a period of 24 months after purchase. This warranty applies to the first retail purchaser and covers only those products exposed to normal use or service. Provisions of this warranty shall not apply to a VDO product used for a purpose for which it is not designed, or which has been altered in any way that would be detrimental to the performance or life of the products, or misapplication, misuse, negligence or accident. On any VDO part or VDO product found to be defective after examination by manufacturer, manufacturer will only repair or replace the merchandise through the original selling dealer. Manufacturer assumes no responsibility for diagnosis, removal and/or installation labor, loss of vehicle use, loss of time, inconvenience or any other consequential expenses. The warranties herein are in lieu of any other expressed or implied warranties, including any implied warranty or merchantability of fitness, and any other obligation on the part of manufacturer, or selling dealer.

Standard Hourmeter

Tech Support 1-800-265-1818
<http://usa.vdo.com>

Instruction Sheet A2C59517158

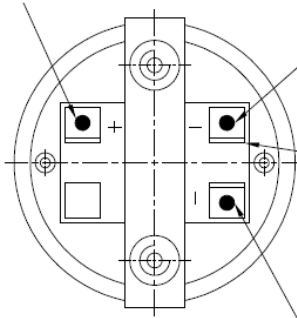
Revision -6/2017

3 Wire Hourmeter: Wiring Options

Option 1 – Switched Power/Constant Ground

“+” Power (constant)

“-” Ground



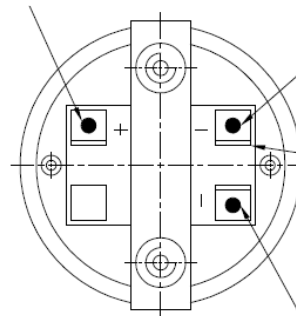
“I” Switched 12/24V
Power from Ignition

Switched power can be sourced from Ignition Switch, ignition system or other ‘hot’ source when engine is in operation.

Option 2 – Switched Ground/Constant Power

“+” Power (constant)

“-” To ground
through a switch



“+” Power (constant)

Switched ground can be in the form of a normally open pressure switch (that close when engine is running) or other ground source that is active only when engine is running.